



ŠKODA
SIMPLY CLEVER

PRESS RELEASE

Page 1 of 3

ŠKODA AUTO produces two-millionth DQ 200 dual-clutch transmission at Vrchlábí plant

- › 2,200 dual-clutch transmissions are made every day at ŠKODA AUTO's Vrchlábí plant
- › To date, ŠKODA AUTO and Volkswagen Group have invested approx. 250 million euros in DQ 200 production
- › Modern seven-speed transmission is used in many ŠKODA models as well as other vehicles from Volkswagen Group
- › With around 1,000 employees, the high-tech plant in Vrchlábí is among the most significant employers in the Region around Hradec Králové

Vrchlábí/Mladá Boleslav, 30 January 2018 – At its Vrchlábí plant in the Czech Republic, ŠKODA AUTO has produced the two-millionth DQ 200 dual-clutch transmission (DSG) since production began in September 2012. The DQ 200 is used in numerous ŠKODA models as well as in other vehicles from Volkswagen Group. Currently, 2,200 of the transmissions come off the production line at the high-tech Vrchlábí plant every day.

“ŠKODA AUTO's plant in Vrchlábí is considered to be one of the most cutting-edge component factories in the industry. As a pillar of ŠKODA's production activities and also within the production network with Volkswagen Group, Vrchlábí is vitally important,” said Michael Oeljeklaus, ŠKODA AUTO Board Member for Production and Logistics, adding, “The major investments in this location contribute to the sustainability of the entire region.”

Frank Engel, Head of Component Manufacturing at ŠKODA AUTO added, “With their high level of personal commitment and outstanding expertise, our colleagues here have made a decisive contribution to the plant achieving the impressive figure of two million DQ 200 transmissions produced in just five years.”

The DQ 200 dual-clutch transmission is among the most modern of its kind in the entire automotive industry. It impresses with gear changes that are both extremely smooth and lightning quick. The DQ 200 is used in numerous ŠKODA models as well as in other vehicles from Volkswagen Group.

ŠKODA AUTO's Vrchlábí plant is one of the most advanced production facilities in Volkswagen Group and, with its workforce of around 1,000 staff, it is also one of the most significant industrial employers in the region of Eastern Bohemia. In production, it relies on state-of-the-art technology such as cooperating robots. They help the employees with one of the most sensitive tasks in transmission production, inserting the clutch piston. The handling robot supplies dozens of machines with parts and brings empty containers back to the warehouse. Added to these are a logistics vehicle that is controlled automatically as well as the state-of-the-art 'Transparent Factory' IT system. The latter was successfully implemented in November of last year following a three-year preparation phase. Furthermore, ŠKODA AUTO recently opened several new transmission test stands at the Mladá Boleslav production site.

The Vrchlábí plant has been part of ŠKODA AUTO's production network for over 70 years. The location was transformed from a vehicle manufacturing plant into a cutting-edge component factory in 2012. Within 18 months, a new factory hall was built and existing production halls were





ŠKODA
SIMPLY CLEVER

PRESS RELEASE

Page 2 of 3

modernised. The rapid preparation of the DQ 200 production facility and the dynamic development of the location earned the Vrchlabí plant the European 'Factory of the Year' title in 2015. This is one of the most prestigious awards for the manufacturing industry in Europe.

In the past five years ŠKODA AUTO, together with Volkswagen Group, has invested a total of around €250 million in the facilities for DQ 200 production, including the renovation of the production halls, technical equipment, the training centre for transmission production and logistics. At the Mladá Boleslav production site, ŠKODA AUTOa invested in the production of gearboxes too and opened several new transmission test stands recently.

Further information:

Tomáš Kotera,
Head of Corporate Communications
T +420 326 811 773
tomas.kotera@skoda-auto.cz

Kamila Biddle,
Spokesperson for Production, HR and Environment
T +420 730 862 599
kamila.biddle@skoda-auto.cz

Media images and infographic:



ŠKODA AUTO produces two-millionth DQ 200 dual-clutch transmission at Vrchlabí plant

The automated seven-speed gearbox is among the most modern of its kind in the automotive industry.

[Download](#)

Source: ŠKODA AUTO



ŠKODA AUTO produces two-millionth DQ 200 dual-clutch transmission at Vrchlabí plant

The rapid preparation of the DQ 200 production facility and the dynamic development of the location earned the Vrchlabí plant the 'Factory of the Year' title in 2015.

[Download](#)

Source: ŠKODA AUTO

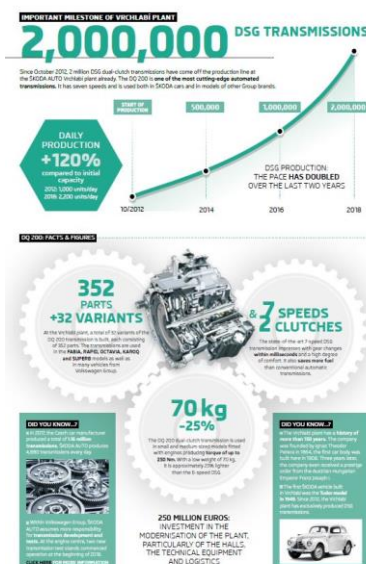




ŠKODA
SIMPLY CLEVER

PRESS RELEASE

Page 3 of 3



Infographics: Important Milestone of Vrchlabí plant
At its Vrchlabí plant in the Czech Republic, ŠKODA AUTO has produced the two-millionth DQ 200 dual-clutch transmission (DSG) since production began in September 2012.

[Download](#)

Source: ŠKODA AUTO

ŠKODA AUTO

- › is one of the longest-established car manufacturers in the world. The company was founded in 1895 – during the pioneering days of the automobile. Today, the company's headquarters remain in Mladá Boleslav.
- › currently offers the following model range: CITIGO, FABIA, RAPID, OCTAVIA, KAROQ, KODIAQ and SUPERB.
- › delivered more than 1 million vehicles to customers worldwide in 2017.
- › has been part of Volkswagen Group since 1991, one of the most successful vehicle manufacturers in the world. ŠKODA, in association with the Group, independently manufactures and develops vehicles as well as components such as engines and gear transmissions.
- › operates at three locations in the Czech Republic; produces in China, Russia, Slovakia, Algeria and India mainly through Group partnerships, as well as in Ukraine and Kazakhstan with local partners.
- › employs over 30,000 people globally and is active in more than 100 markets.

