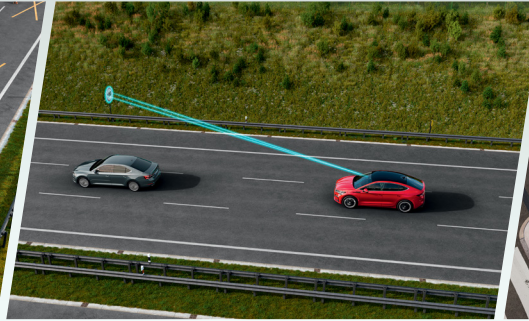


Adaptive Lane Assist

Adaptive Lane Assist intervenes in an attempt to keep the vehicle in lane and preventing it from 'weaving'.



Traffic Sign Recognition

Traffic Sign Recognition scans the space in front of the vehicle and compares the signs detected with the navigation system.



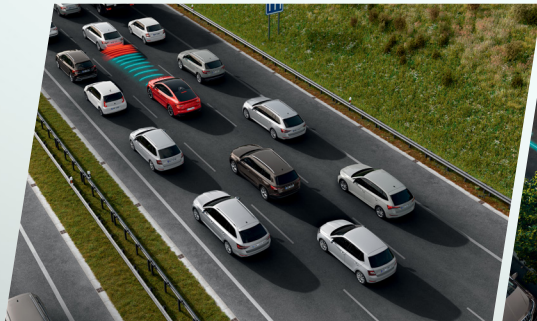
Turn Assist

Turn Assist monitors oncoming vehicles when the driver wishes to turn left and brings the car, if necessary, to a standstill.



Crew Protect Assist

If the sensors register an imminent collision or the driver initiates emergency braking, Crew Protect Assist automatically takes precautions to optimally protect the passengers; it tightens the seat belts and closes the windows in the case of an impending collision or if there is a risk of skidding or flipping over.



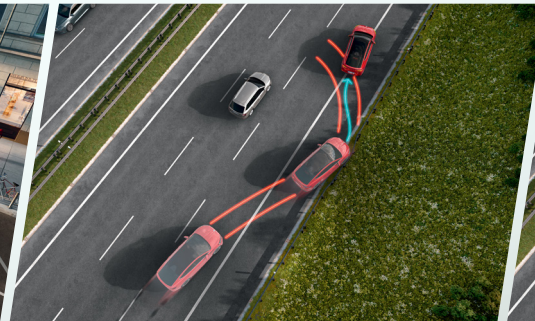
Traffic Jam Assist

Traffic Jam Assist features Adaptive Cruise Control including a Stop&Go function, enabling the car to follow the vehicles ahead in congested traffic, automatically bringing the car to a standstill and have it pull away again within up to three seconds.



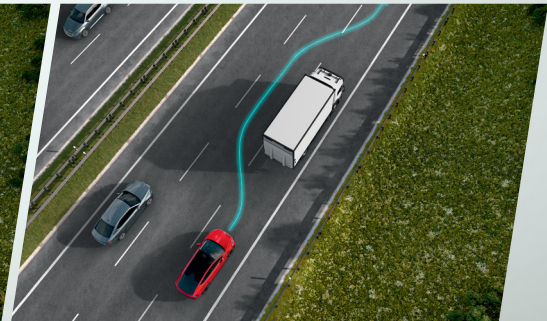
Urban Evasive Steering Support

Travel Assist 2.5 is supplemented with Urban Evasive Steering Support, a feature that navigates the driver around traffic islands or parked cars.



Multi-Collision Brake

Following an accident, this system prevents the car from rolling any further in an uncontrolled manner, thus reducing the risk of follow-on collisions. The system also activates the brake and hazard lights.



Assisted Lane Change

At speeds above 90 km/h, the Assisted Lane Change feature can autonomously change lanes on motorway-type roads.